



Our history is made of
discoveries,
entrepreneurship,
creativity and permanent
innovation.

Welcome to Portugal



Index



[Why Portugal - Welcome to our country](#)

[A bridge to business](#)

[Economy and foreign investment](#)

[Competitiveness & security](#)

[Quality of life](#)

[Skills & talent](#)

[Infrastructures](#)

[Telecom & technology](#)

[Environmental quality](#)

[Research and innovation](#)

[Innovative and entrepreneurial country](#)

[A trusted country](#)

[Collective digital ambition](#)

[3 Pillars](#)

[12 Emblematic measures](#)

[What we offer](#)

[Talent](#)

[Fiscal support](#)

[Incentives](#)

[Our commitment](#)

[Our cities are our soul](#)

[Portalegre](#)

[Viseu](#)

[Abrantes](#)

[Vila Real](#)

[Covilhã](#)

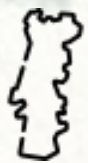
[Évora](#)

[Thank you](#)

Why Portugal

Welcome to our country

Portugal encourages creativity and audacity. You will find a country at the forefront of technological developments, with the perfect combination of cultural traditions and European lifestyle.



Portugal

A modern, sophisticated country, facing the future.

Able to ally tradition and innovation.

A welcoming country, full of sun, with breathtaking landscapes and a unique gastronomy.

An open and multicultural country, able to bring together the best of your experience and knowledge to give rise to solutions that advance global business.

Portugal exists, as a country, since 1143, with stable borders since 1297.





A bridge to business

Nearest European country to the **US** and **Canada**.

Access to **European markets** (>500 M people).

A door to **Portuguese speaking countries** (>261 M people).

A European Union member since 1986, fully committed to the EU, Eurozone and Schengen area.



5 hours
Difference
from New
York

3 hours
Difference
from
Moscow

1 hour
Difference
from Central
European
Time

**Same
time**
Zone as Uk
and Ireland



Economy and foreign investment

4,8% projection of the rate of change of GDP in 2021 vs 2020
(Source: Banco de Portugal, 2021)

14% GDP growth estimate between 2021 and 2023
(Source: OECD Economic Survey, 2021)

#4 in EU-27 in turnover of SME via e-commerce (Source: DESI, 2021)

#39 out of 190 countries, in the Ease of Doing Business Ranking
(Source: The World Bank, 2020)

#10 of the most attractive countries for foreign direct investment in Europe
(Source: EY, 2020)

154 FDI projects in 2020, -3% compared to 2019 vs -13% in the EU (Source: EY, 2020)

17,6% CAGR of FDI entry in Portugal (Source: EY, 2011-2018)





Competitiveness & security

#1 Reduced exposure to terrorism

(Global Competitiveness Report – WEF, 2020)

#2 Most peaceful country in the world

(Global Peace Index 2021)

Co-ranking **#1** worldwide in trading across borders

#1 for working remotely, among 111 countries

(Kayak, 2021)

Services sector is **83.5%** of GVA
and employs **69.8%** of the active population

(INE, 2019)

- Our social stability - **peaceful**
 - Competitive labor costs. **Innovative economy dynamics**
 - High labor skills - **talent & competences**
 - Health and logistic facilities
Infrastructures
 - Telecommunications and technology
- **Innovation**
 - As well as our **quality of live**
- Make Portugal a **unique place** with high potential to expand and **develop business.**



Quality of life

#13 Worlds' best sustainable destination for the expats
(InterNations, expat insider, 2020)

Lisbon is the **3rd** healthiest city to live in
and the **#6** most popular for international meetings
(money, 2021; International Congress & Convention Association's ranking)

70% of sunny time, **260** rain-free days, **2.600** km of coastline

15,7°C annual average temperature in mainland Portugal
(Source: IPMA, 2021)

#12 in the EU-27 with a lower cost of living,
with consumer goods prices 17% below the EU average
(Source: Price level index for consumption expenditure, Eurostat, 2020)

3rd year in a row as the world's leading destination



The healthiest places to live in the world

HEALTHY → UNHEALTHY



Top 20 Healthiest Places to Live

1	Spain	6	Italy	11	Slovenia	16	Denmark
2	Portugal	7	Sweden	12	Finland	17	Poland
3	Switzerland	8	Norway	13	Ireland	18	Germany
4	Japan	9	Singapore	14	France	19	Cyprus
5	Iceland	10	Austria	15	Estonia	20	England

*Based on obesity rates, pollution rates, food prices, life expectancy and sunlight hours

[MONEY.CO.UK/HEALTHIEST-PLACES-TO-LIVE](https://money.co.uk/healthiest-places-to-live)



Skills & talent

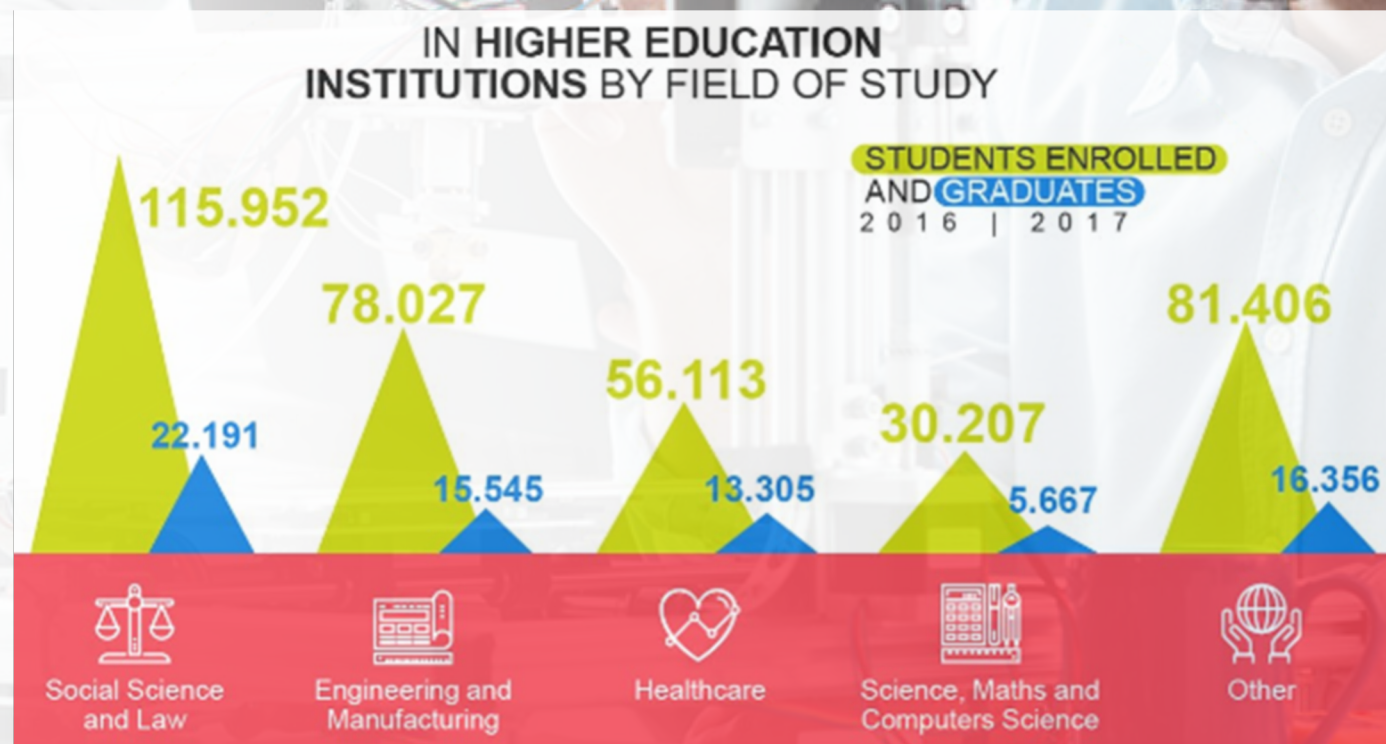
#4 Women participation in labour force

#7 Language skills

#8 Pupil-teacher ratio (high school)

#12 Management education

Source: IMD World Talent Ranking 2020 (among 63 countries)





Skills & talent

114 Higher education institutions

(Source: study-research.pt)

~5,000 courses and **~350,000** students

(Source: study-research.pt)

26% of higher education students in STEM courses

(Source: OECD, 2020)

#2 in Europe with the highest rate of engineering graduates, 20%

(Source: Eurostat, 2020)

84% of respondents believe that skilled labor is one of the main indicators of attractiveness in the country

(Source: IMD World Competitiveness Ranking, 2021)

307 Research & Development units in all domains of knowledge awarded **525 million euros** from Horizon 2020

(Source: study-research.pt)

2nd Highest rate of engineering graduates in Europe

3 Portuguese universities in the Financial Times Ranking – Master in Finance 2020

14,1% Foreign students in higher education (2019/2020)

#12 English Proficiency Index 2019. Portugal is high proficient in English

4 Most spoken foreign languages: English, French, Spanish and German



Infrastructures

#9 in Europe in terms of road quality (Source: WEF, 2020)

3 065 Km extension of the motorway network in 2021, 10X more than in 1990 (Source: PORDATA, 2021)

#21 Quality of overall infrastructure (in 141 countries) (Global Competitiveness Report - WEF, 2019)

#1 Health system in southern Europe





Telecom & technology

#3 in the EU-27 in % of **fixed broadband take-up** of at least 100Mbps (Source: DESI, 2021)

#5 Communication technology (in 63 countries)
(World Digital Competitiveness Ranking, 2020)

#7 on EU-27 in the **EIBIS Corporate Digitalisation Index**
(Source: EIB Investment Survey, 2020)

#16 Integration of digital technology
(Digital Economy and Society Index, 2020, EU 28)

76% of investors refer to the **telecommunications infrastructure** as an **attractiveness factor for the country** (Source: EY Attractiveness Survey, 2021)

```
mirror_mod.use_x = False
mirror_mod.use_y = True
mirror_mod.use_z = False
elif_operation == "MIRROR_Z":
    mirror_mod.use_x = False
    mirror_mod.use_y = False
    mirror_mod.use_z = True

#selection at the end -add back the deselected mirror modifier object
mirror_ob.select= 1
obj.select=1
bpy.context.scene.objects.active = modifier_ob
print("Selected" + str(modifier_ob)) # modifier ob is the active ob
mirror_ob.select = 0
done = bpy.context.selected_objects[0]
obj.data.object.name = "Mirror"
obj.name = "Mirror"
obj.parent = mirror_ob
```



Won the hosting of Web Summit until 2028



Environmental quality

#5 in EU-27 regarding the share of renewable energy in gross final consumption in 2020, 34.1% vs 22% in EU-27 (Source: Eurostat, 2020)

#2 in the world in the incorporation of renewable energies in the generation of electricity, with 79.5% incorporation (Source: APREN, in the 1st quarter of 2021)

#16 among 64 countries, in the Climate Change Performance Index (Source: CCPI, 2022)

13,4% reduction of GHG emissions in 2019 vs 2009 (Source: DGEG, 2019)

Renewable energy leader

Resilient in the face of climate change



Research and innovation

#31 among 132 countries, in the Global Innovation Index
(Source: WIPO, 2021)

#13 at EU-27 in the R&D Intensity Ratio
(Source: Eurostat, 2020)

18 Industrial clusters

26 Collaborative laboratories (CoLAB)

30 Interface Centers for Technology (CIT)

23 Tech parks

158 Incubators

17 Digital Innovation Hubs (DIH)

The near future:

5 Competence centers for high performance computing

30 testbeds

Zonas Livres Tecnológicas (Free Zones for Technology)



Innovative and entrepreneurial country



European innovation
Scoreboard
(2021)

With a dynamic entrepreneurship ecosystem that already has **7 unicorns** valued at more than **38.6 billion dollars**



Inteligência artificial

Agentif ai

Unbabel

HYPELABS

loqr



IoT

CODACY

prodsmart

VENIAM



IA & RA

abyssal



e-Commerce

FARFETCH

uniplaces



Robótica

Follow Inspiration

OceanScan
Marine Systems & Technology



Fintech

feedzai

JAMES



A trusted country

A safe country to invest

Presence of highly recognized companies

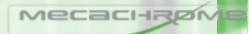


67 Countries

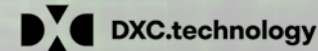
2nd

**MOST OPEN
COUNTRY FOR
FDI 2018**

INDUSTRIAL INVESTMENT: NEW & EXPANSION



RELEVANT MERGERS & ACQUISITIONS





MOVING FORWARD. MOVING WITH A PURPOSE.



Collective digital ambition



Be the engine of transformation in the country

Purpose

- Accelerating Portugal
- Projecting Portugal worldwide
- Leaving no one behind

3 Pillars

01

Training and
digital inclusion
of people



People

02

Digital
transformation
of enterprises



Companies

03

Digitalization
of the State



State

12 Emblematic measures

01 Training and digital inclusion of people

- | | | | |
|----|--|---|-----------|
| 01 | Digitalization of schools | ✓ | 2020-2023 |
| 02 | UPskill Program intensive training | ✓ | 2020-2022 |
| 03 | #eusoudigital Program for digital inclusion | ✓ | 2020-2023 |
| 04 | Social tariff for access to services of internet | ✓ | 2021 |



02 Digital transformation of enterprises

- | | | | |
|----|--|---|------|
| 05 | Program e-Residency | ✓ | 2021 |
| 06 | Promotion of Free Zones for Technology (ZLT) | ✓ | 2021 |
| 07 | +CO3S0 Digital | ✓ | 2020 |
| 08 | Digital Innovation Hubs | ✓ | 2021 |



03 Digitalization of the State

- | | | | |
|----|--|---|------|
| 09 | Digitalization of the 25 most required public services | ✓ | 2021 |
| 10 | Translation of Public Administration websites | ✓ | 2021 |
| 11 | Cloud Strategy | ✓ | 2020 |
| 12 | Simplification of public procurement | ✓ | 2020 |



What we offer

The right conditions
to host your business

What we offer



TALENT



**FISCAL
SUPPORT**



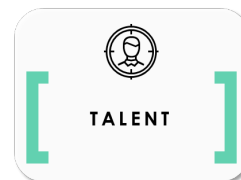
INCENTIVES



**OUR
COMMITMEN
T**

Talent

We can create specific programs tailored to enterprises needs, such as UPskill.



9 months of training with Government support (UPskill Program)

80% Minimum of hiring from training program after the 9 months

Training areas

Training period of theoretical / practical training – in class
(up to 6 months)

training period in context @ company
working period (3 months)

Gross Monthly wage
1.200€

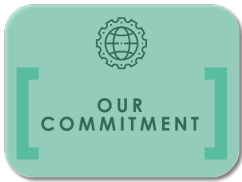
Minimum wage while
training (supported by Gov. over first 6 months)
740,83€

Co-design of training courses with companies

Java
.NET
C++
Python
Plataforma Outsystems
CRM (Ms /Salesforce)

ERP (SAP)
ERP (Functional integration)
ERP (analytics)
Cloud
Cybersecurity
Cobol
...

Talent



Start UP Tech Visa

Portugal+



WHAT

Tech Visa is a certification program addressed to companies that wish to attract **HIGHLY QUALIFIED AND SPECIALIZED STAFF** from countries not included in the Schengen area.

TARGET

This program aims to ensure that highly qualified staff can access jobs created by **PORTUGUESE INCORPORATED COMPANIES OR STARTUPS**, in a **SIMPLIFIED WAY**.

WHERE

Tech Visa invites the interview candidates at the **Portuguese Embassies/Consulates** in the respective country of origin to obtain the residence visa.

20

BUSINESS DAYS to analyze the application

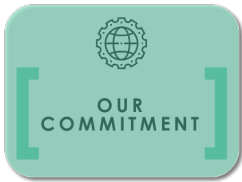
The certification allows a REDUCTION OF THE RECRUITMENT PERIOD from several months to a few weeks

91% in ICT



<https://www.iapmei.pt/Paginas/Tech-Visa-en.aspx>

Talent



Start UP Visa

WHAT

Startup Visa a **residence visa for entrepreneurs**, which aims to **attract to Portugal investment, talent and innovation capacity**.

TARGET

Young entrepreneurs from all over the world who want to open an innovative company **will have quick access to a residence visa** that gives them the possibility to create or move their startup enterprise to Portugal.

AIM

This program aims **to strengthen the innovation ecosystem** and to affirm Portugal as an open country to entrepreneurship and to all **those who, with their knowledge and capacity for innovation, can bring investment to the portuguese economy**, capable of strengthen and enhance national skilled human resources.

<https://www.iapmei.pt/Paginas/StartUP-Visa-en.aspx>

Fiscal support



RFAI

Fiscal Support Regimen to Investment

The tax which allows companies to deduct from the collected collection percentage of investment in non-current assets (tangible and intangible)



R&D INVESTMENT

sifIDE

Supporting their efforts in R&D by deducting from the collection of the IRC a percentage of their respective R&D expenses

https://info.portaldasfinancas.gov.pt/pt/informacao_fiscal/codigos_tributarios/cfi/Pages/codigo-fiscal-do-investimento-indice.aspx

<https://sifide.ani.pt/>

Fiscal support



TALENT



FISCAL
SUPPORT



INCENTIVES



OUR
COMMITMENT



JOB CREATION TAX BENEFIT

TSU Exemption for 3 years to long-term unemployed worker, or... workers who are already at the company service with the with fixed-term employment contract.



INCENTIVES FOR EMPLOYEES (Non-Habitual Residency)

Flat rate for **Income tax**
of **20%** for 10 years

Incentives



ATIVAR.PT

Internships with **9 month** duration, non renewable

Target: young people and professional reconversion of the unemployed

IEFP Support

80% Grants supported by IEFP

...according to qualifications of intern *(IAS - 438,81€):

- **High School level** - From 526,57€ to 614,33€
- **Post High School** - 658,22€
- **Bachelor Degree** - 789,86€
- **Masters Degree** - 921,50€
- **PhD** - 1053,14€

Lunch subsidy - daily rate of 4,77€

Insurance - 14,46€

Transport expenses - 43,88€

<https://iefponline.iefp.pt/IEFP/medida/estagioemprego/descEstagiosAtivarPT.jsp>

Incentives



TALENT



FISCAL
SUPPORT



INCENTIVES



OUR
COMMITMENT

Emprego Interior +

Employment contracts whose place of work implies their geographical mobility for inland territory.

Max eligible: **2632,86€** (6x IAS)

Increase on the support of **1316,43€** for each household member that accompanies the worker in this migration

Additional support with moving costs – **877,62€**

CONVERTE +

Financial support, of a transitional nature, granted to employers who convert fixed-term employment contracts (certain or uncertain) into permanent employment contracts.

4 times the basic monthly remuneration provided for in the open-ended employment contract, up to a limit of 7 times the IAS *

Max: 7 x IAS = € 3.071,67

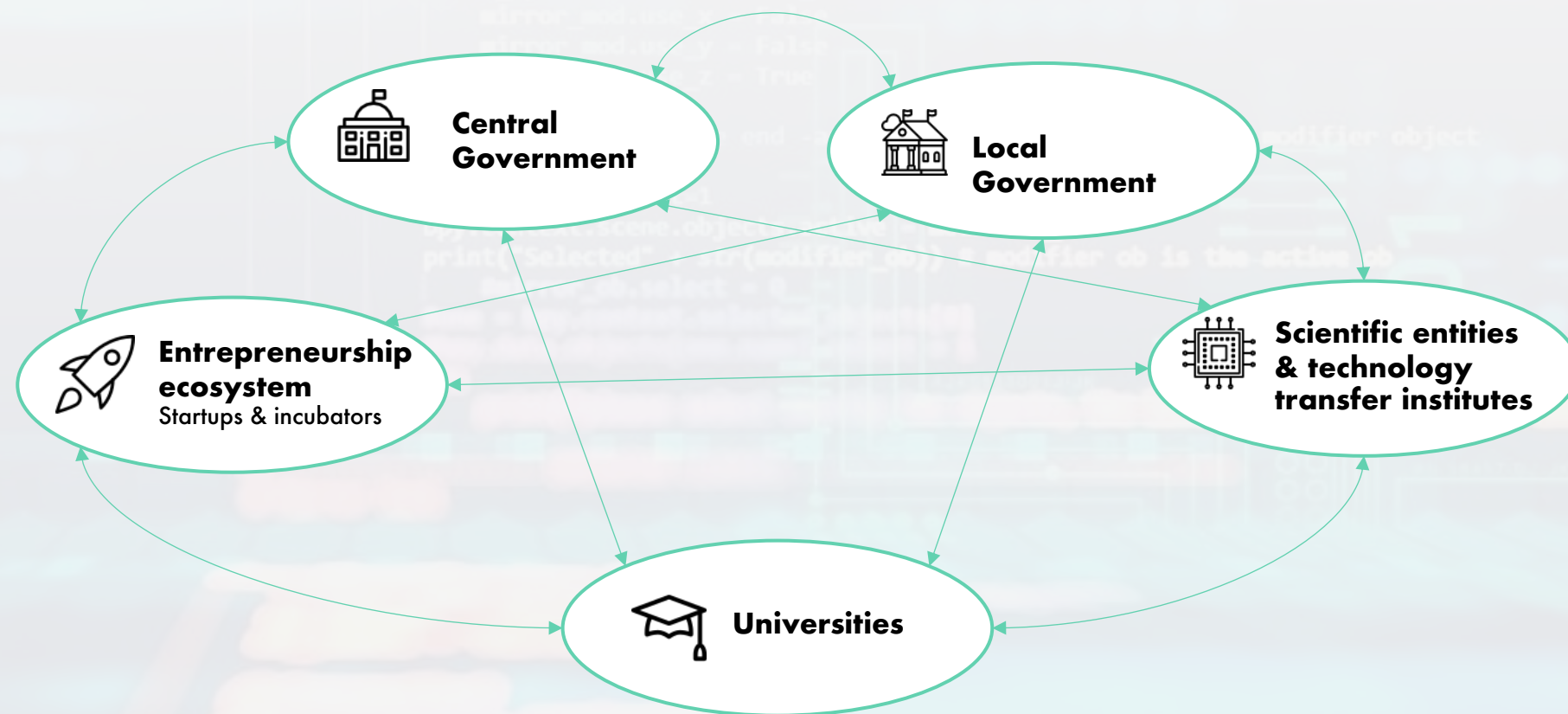
<https://iefponline.iefp.pt/IEFP/interiorMais.do?action=overview>

<https://iefponline.iefp.pt/IEFP/converteMais.do?action=overview>

Our commitment

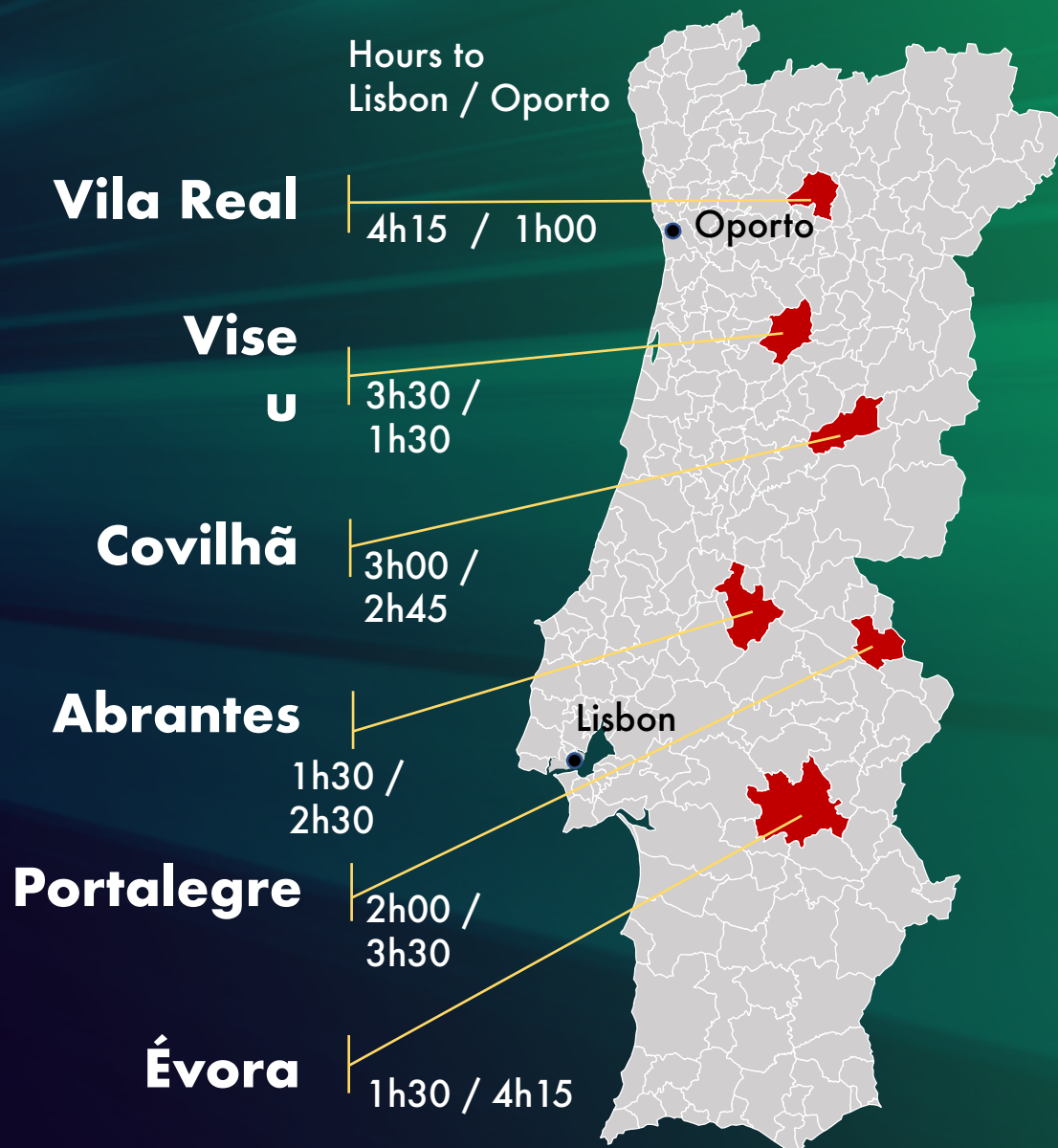


High level commitment, alignment and agile relationships between government, universities, entrepreneurship ecosystem, scientific entities and technology transfer institutions aiming innovation and acceleration with **less bureaucracy**.



Our cities. ...are our soul.

	Population	AVG Monthly Wage	University students	AVG banking evaluation houses
Abrantes	35.608	1.085€	323	796€/m ²
Évora	52.664	1.330€	6.876	1.099€/m ²
Covilhã	47.394	943€	6.518	814€/m ²
Portalegre	22.493	1.003€	1.548	874€/m ²
Vila Real	49.910	1.038€	6.392	1.025€/m ²
Viseu	97.249	987€	5.066	980€/m ²



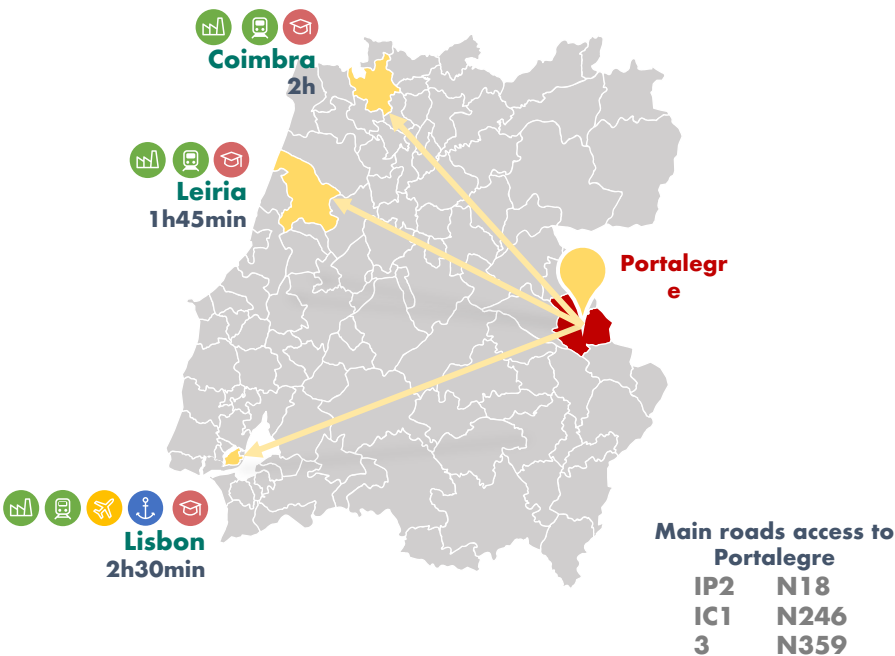


Portalegre

Our cities. Portalegre



Located in the Central Region of Portugal, between the plain and the mountain, the city of Portalegre has a great cultural, scenic and gastronomic richness.



KEY FIGURES

22,493
Population

2,879
Non-financial enterprises

447.1 km²
Area

1,003.00€
Monthly wage average

1,548 U
niversity students

874.00€/m²
Average banking evaluation of houses

12.4%
Young people (less than 15 years old)

12%
Weight of municipal expenses with environment

Source: Pordata

Our cities. Portalegre

ALENTEJO SCIENCE AND TECHNOLOGY PARK - PORTALEGRE

Soft landing Facilities and Services:

- Offices (m2) 20
 - Meeting Rooms 1
 - Specific R&D infrastructures
- Research centers on IT technologies, health and circular economy from University of Evora



POLYTECHNIC INSTITUTE OF PORTALEGRE

- Education & Social Sciences
- Technology and Management
- Agriculture
- Health



BIOBIP – BIOENERGY AND BUSINESS INCUBATOR OF PORTALEGRE (PART OF PCTA)

BioBIP's mission is to foster and disseminate the entrepreneurial spirit throughout the academic community and the business environment, supporting the development of innovative business ideas and aiming their successful implementation in the market. BioBIP – Bioenergy and Business Incubator of Portalegre has three usage regimes: Physical incubation, Virtual incubation and "Incubator Services". BioBIP's infrastructure provides individual areas and common services promoting a better reception for promoters of innovative, technologically-based projects and ideas with high growth potential.



Examples of enterprises installed in Portalegre



GRUPONABEIRO



HUTCHINSON®

EntoGenex™
For a better world!

evertis
Packaging Solutions

Selenis
PET Solutions



Viseu

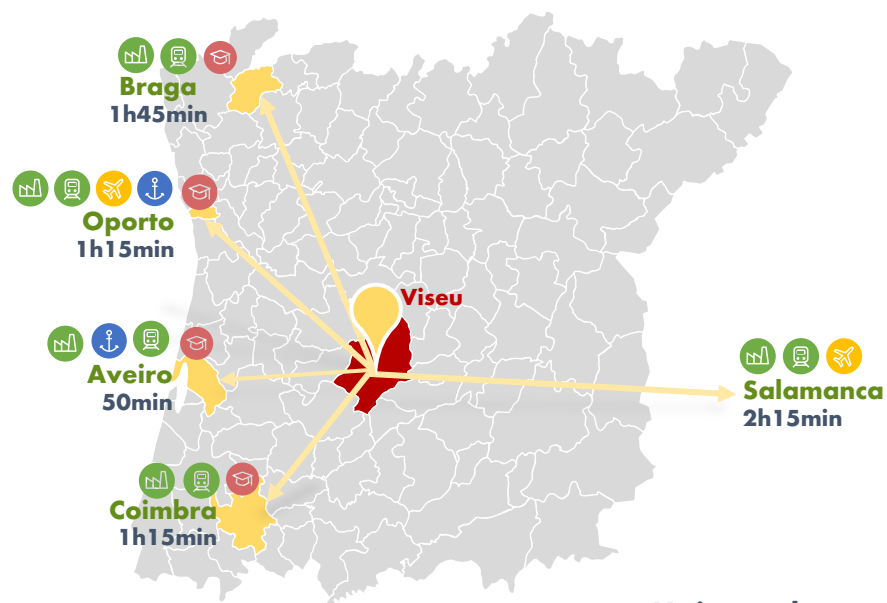
VISEU

Our cities. **Viseu**



MUNICÍPIO DE
VISEU

This municipality in the district of Viseu is located in the province of Beira Alta, in the Central Region and sub-region of Dão-Lafões. With 97,249 inhabitants and an urban area of about 66,143 residents, Viseu is one the main cities of the Central Region of Portugal.



Main roads access to Viseu

A25
A24
IP3
IP5
IC37

KEY FIGURES

97,249

Population

11,441

Non-financial
enterprises

507.1 km²

Area

987.00€

Monthly wage average

5,066

University students

980.00€/m²

Average banking
evaluation of houses

13.7%

Young people (less than 15
years old)

16%

Weight of municipal expenses
with environment

Source: Pordata

Our cities. **Viseu**

Infrastructure

Business vocation

Municipal grants

TALENT & KNOWLEDGE



Católica University - Viseu

- Management
- Biomedical sciences
- Dental medicine



Polytechnic Institute of Viseu

- Technology and Management
- Agriculture
- Health

Composed of five higher education schools and a community made up of more than 5700 students, 355 teachers and 230 employees.

HEALTH



CUF Viseu Hospital



Hospital de São Teotónio

RESEARCH & INNOVATION

Centro de Incubação
Tecnológico de Viseu (CITV)
V21 (10.000 m2)



Our cities. **Viseu**

Infrastructure



IP3 Coimbra-Viseu

IP3 will be the first intelligent highway in the country, with Wi-Fi and 5G, which will allow the establishment of a communication system between infrastructure, vehicles and users.

Business vocation



Viriato

Unmanned vehicle, 100% electric, integrated in the mobility system of Viseu, which will be the future public transport in the city, replacing the current funicular.

Municipal grants



MUV – Urban Mobility of Viseu

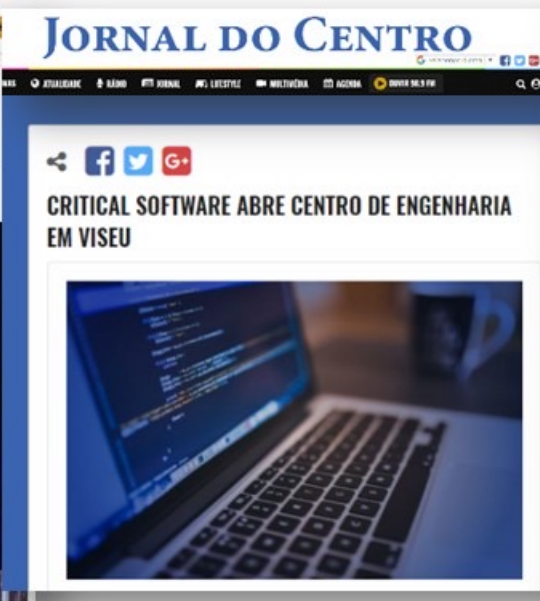
New mobility system, more efficient, articulated, economical and environmentally friendly, creating base conditions for the consolidation of Viseu as a smart city, accessible and designed for all.

Our cities. **Viseu**

Infrastructure

Business vocation

Municipal grants



Examples of enterprises installed in Viseu



Deloitte.



COMPTA



PSA PEUGEOT CITROËN



Our cities. **Viseu**

Infrastructure

Business vocation

Municipal grants

EDUCA

Program for the entire educational community of Viseu that promotes the quality, inclusion and diversity of teaching to 23 thousand children, with the participation of 113 educational establishments and more than 60 local partners in 24 projects.

INVESTE

Program through which a set of investment incentives will be created, such as the provision of infrastructure, the creation of support services for licensing and installation and the allocation of tax incentives.

WISEU PRIMEIRO 2021

This program defines the municipal governance priorities until 2021, taking as major areas of focus in this period:

- People
- Services
- Territory
- Governance

ACONCHEGA

Initiative that aims to promote the inclusion of higher education students in the historic center, at a reduced cost, and to monitor the elderly, fostering the intergenerational relationship.

PATRIMÓNIO

This initiative aims the knowledge, protection and enhancement of cultural, material and intangible heritage, the city and its history deeply linked to the idea of nationality.

CULTURA

It is a financial instrument to support independent cultural projects, with the aim of sustaining, diversifying, expanding and simplifying the motivation for cultural creation, programming and revitalization.



Abrantes

Our cities. **Abrantes**



In this town located in the Middle Tagus Region you will find a quiet and rural area, friendly population, low pollution and low noise, and areas of natural and scenic beauty. It has a wide range of equipment, infrastructure and public services to support business.

KEY FIGURES

35,608

Population

3,077

Non-financial enterprises

714.7 km²

Area

1,085.00€

Monthly wage average

323

University students

796.00€/m²

Average banking evaluation

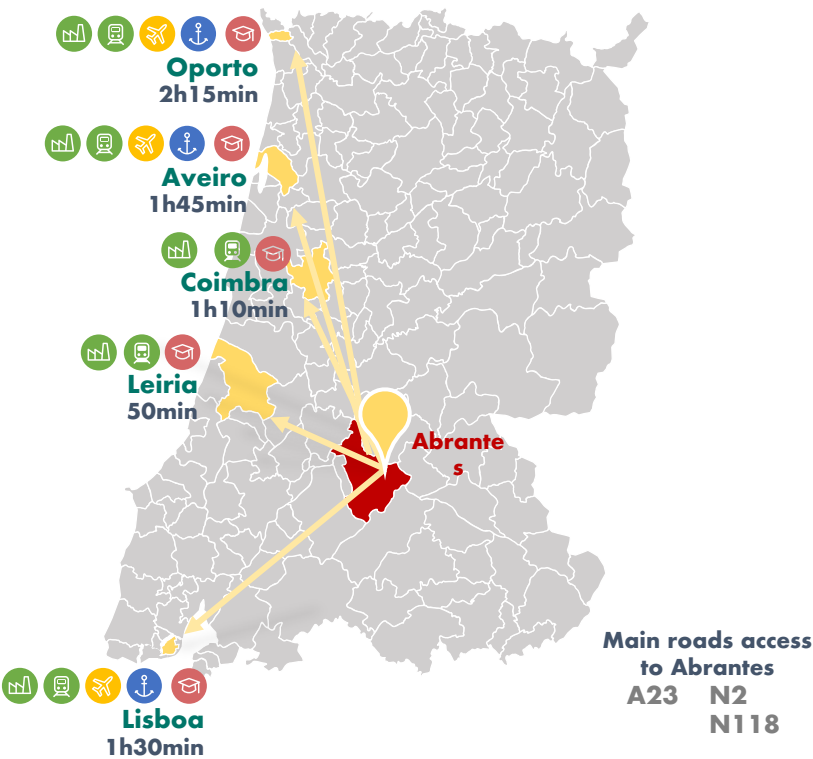
11.1%

Young people (less than 15 years old)

3%

Weight of municipal expenses with environment

Source: Pordata



Our cities. **Abrantes**

Infrastructure

Business vocation

Municipal grants

TALENT & KNOWLEDGE



Universidade Aberta - Abrantes

Lifelong learning in order to identify and satisfy specific training needs of the region.

Access to information and knowledge society and acquisition of skills in the use of digital technologies.



Polytechnic Institute of Tomar

- Several courses in engineering, computer science and digital technologies
- Master in Management
- Master in HR Management
- Post-graduation in Industrial Production
- Post-graduation in Logistics

HEALTH



Hospital of Abrantes



Hospital of Tomar



Hospital of Torres Novas

RESEARCH & INNOVATION



INOVPOINT:

16 rooms 30m2, 40m2, 60m2 and 80m2

1 cowork space - 8 workstations

Availability of common spaces and shared services:
3 meeting rooms, small auditorium and multipurpose room, equipped with audio and video.

IT.POINT:

Information technology business center. Up to 1,500 m2.

Business Accelerator:

Possibility of construction of buildings with areas of 300m2, 600m2 or 900m2.

Start-ups support

Our cities. **Abrantes**

Infrastructure

Business vocation

Municipal grants

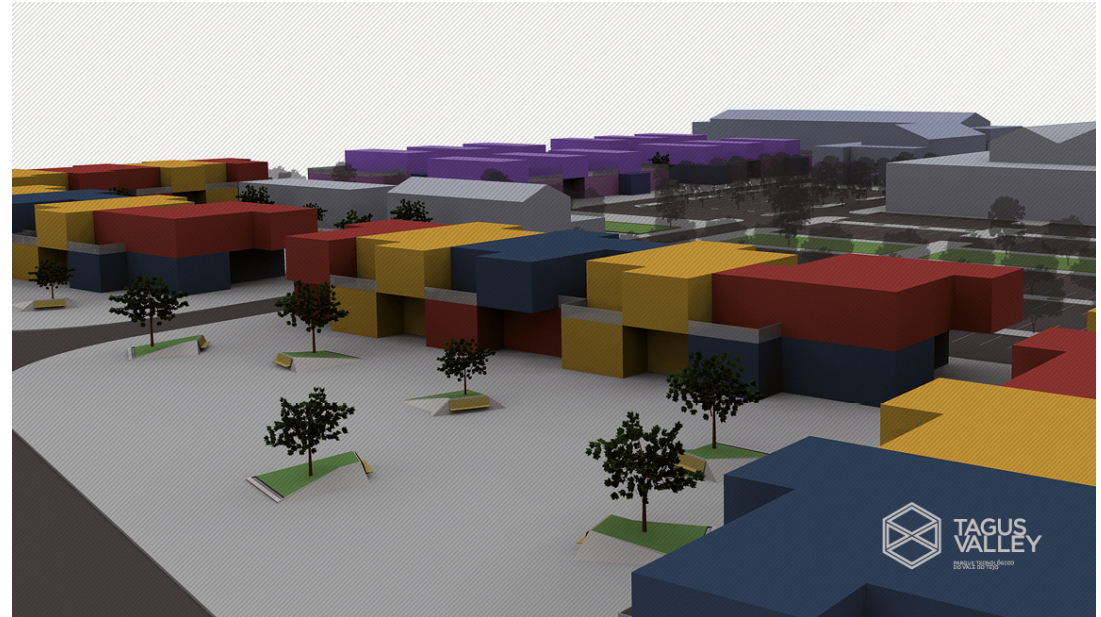
Industrial vocation

- Electricity production
- Metallurgy and metalwork
- Forest exploitation and renewable energies
- Food processing with particular emphasis on olive oil

Logistics

Tourism

Information and Communication Technologies (ICT)



*Example of
enterprise installed
in Abrantes*



Our cities. **Abrantes**

Infrastructure

Business vocation

Municipal grants

INCENTIVES APPLICABLE TO THE WHOLE COUNCIL - ALL INVESTMENT AREAS:

Incentive to business projects of municipal interest:

- With the net creation of jobs in the municipality of Abrantes:
- A minimum of 10 jobs, in facilities specifically built, acquired or leased for that purpose, or
- A minimum of 20 jobs in facilities that are already used in the beneficiary entity's day-to-day operations
- Municipal support to be granted
- Fiscal and tax nature (exemption from ...):
- IMT - Properties specifically acquired for the activity included in the supported business project
- IMI (5 years, subject to renovation) - Buildings destined to exercise the activity included in the supported business project
- Derrama (5 years, subject to renewal) - Companies with no direct or indirect activity in the municipality of Abrantes in the last three economic years
- Payment of municipal fees due for carrying out urban operations associated with the business project

Urban Perequation Regulation

- To promote urban rehabilitation - Exemption from the urban charge corresponding to an increase in the construction area up to 50 m² in expansion or reconstruction works.
- To foster economic activity in general - 50% reduction in the urban charge related to the respective buildings.
- To promote the use of rustic land - Reduction of 75% of the urban burden, relating to buildings intended for complementary economic activities of existing agricultural or forestry exploitation.

INCENTIVES IN FORCE IN INDUSTRIAL AREAS:

- Reduced installation price:
- Industrial Lot: 1,50€/m²
- Lot for trade and services: 5.00€/m²

INCENTIVES IN THE VALLEY OF TEJO TECHNOLOGICAL PARK

- Incentive to the creation of qualified jobs in the Vale do Tejo Technological Park:
- Allocation of financial contribution to the basic monthly salary for a maximum period of 2 years per supported job:
- 1st Year - maximum of 35% of the base salary up to a limit of 500€/month
- 2nd Year - maximum of 35% of the base salary up to the limit of 250€/month

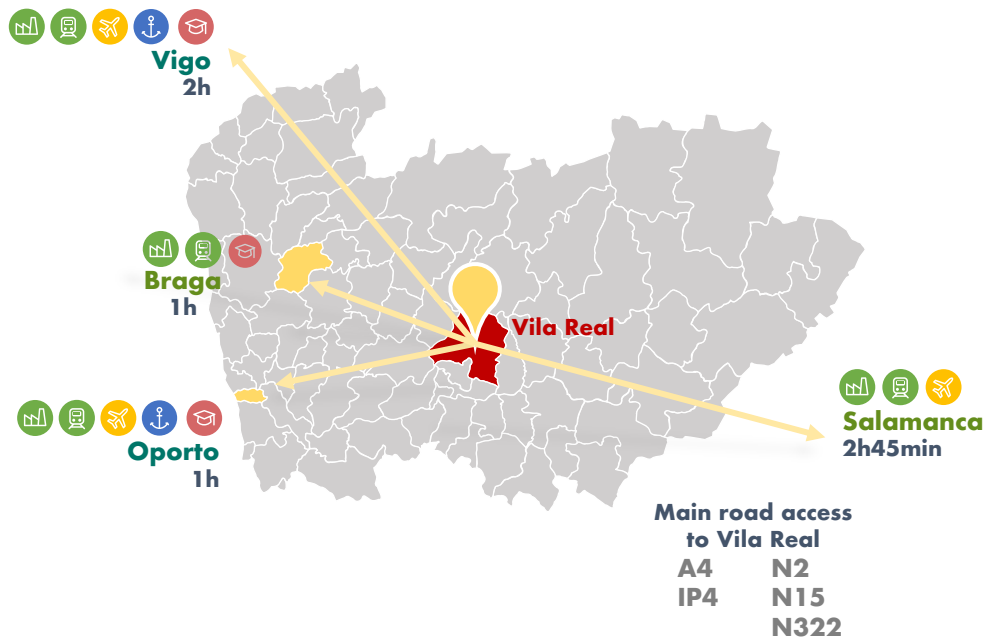


Vila Real

Our cities. Vila Real



Vila Real, located in Northern Portugal, is one of the most livable cities in the country.



KEY FIGURES

49,910

Population

6,806

Non-financial enterprises

714.7 km²

Area

1,038.00€

Monthly wage average

6,392

University students

1,025.00€/m²

Average banking evaluation of houses

12.7%

Young people (less than 15 years old)

4%

Weight of municipal expenses with environment

Source: Pordata

Our cities. Vila Real

REGIA-DOURO PARK

- Regia-Douro Park is a park of science and technology focused on the following branches: agri-food, agri-industrial, winemaking, viticulture, green economy and environment.



UNIVERSITY OF TRÁS-OS-MONTES E ALTO DOURO

- Education & Social Sciences
- Technology and Management
- Agriculture
- Health



INNOVATION CENTERS AND POLES

Innovation centers

- Animal and Veterinary Science Center (CECAV - UTAD)
- Center for Language Studies (CEL - UTAD)
- Center for Transdisciplinary Studies for Development (CETRAD - UTAD)
- Research Center for Sport, Health and Human Development (CIDESD - UTAD)
- Center for Research and Agro-Environmental and Biological Technologies (CITAB - UTAD)
- Chemistry Center - Vila Real (CQVR - UTAD)

Innovation poles

- Mathematics Center (CMAT - UTAD)
- Institute for Biosystems and Integrative Sciences (BioISI - FCUL)
- Research Center for Didactics and Technology in Training of Trainers (CIDTFF - UA)
- Institute for Systems and Computer Engineering, Technology and Science (INESC TEC)
- Philosophy Institute of the University of Porto (IF - UP)
- Associated Laboratory in Energy, Transportation and Aeronautics (LAETA - FEUP)
- Center for Building Materials and Technologies (C-MADE - UBI)
- Geosciences Center (CGeo - UC)

MUNICIPAL GRANTS

- Financial support for projects of municipal concern to raise livestock production
- Exemption or reduction for real estate municipal tax and for transactions municipal tax

Examples of
enterprises install
ed in Vila Real





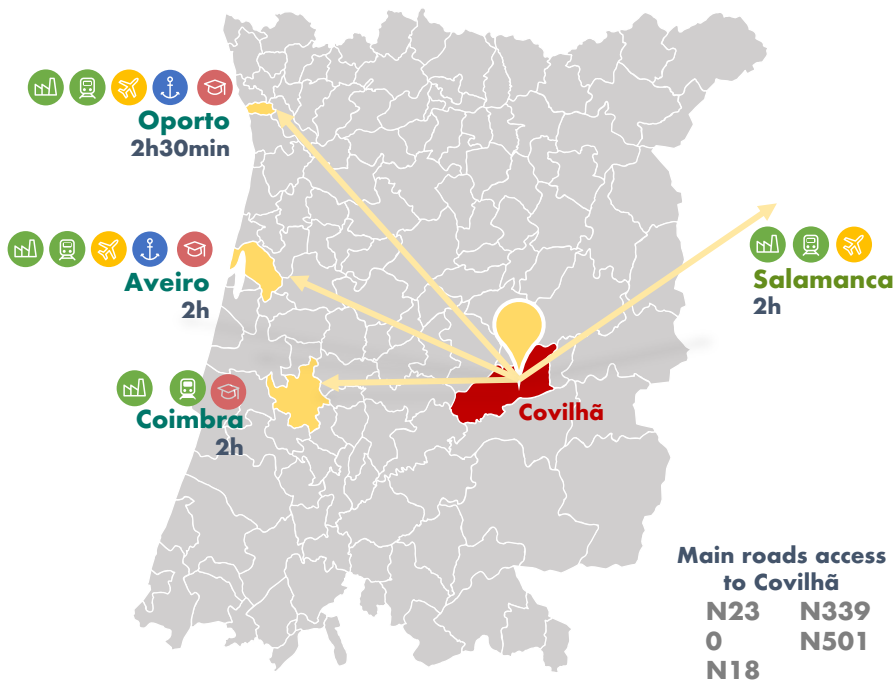
Covilhã

Our cities. **Covilhã**



Covilhã is a municipality located in the Central Region of the country. In the past, due to its strategic potential, the city was used for attack and defense purposes; later, thanks to the textile industry, it came to be known as the "Portuguese Manchester". Today Covilhã is an urban region with all the competencies and aptitudes for businesses.

KEY FIGURES



47,394
Population

4,510
Non-financial
enterprises

555.6 km²
Area

943.00€
Monthly wage average

6,518 University
students

814.00€/m²
Average banking
evaluation of houses

11.1%
Young people (less than 15
years old)

0.5%
Weight of municipal expenses
with environment

Source: Pordata

Our cities. **Covilhã**

INDUSTRIAL PARKS

Canhoso

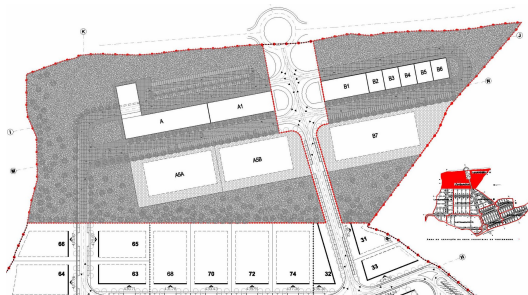
- **541,700m²**
- **75 enterprises in:** textile, trade, transports, warehouses and communications, car repair, metallomechanics, precision mechanics, construction, services

Tortosendo

- **810,000m²**
- **62 enterprises in:** wool, agro-industry, plastics, clothing, metallomechanics, precision mechanics, construction

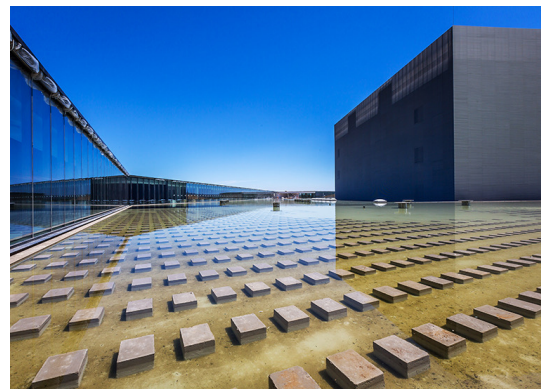
PARKURBIS – PARK OF SCIENCE AND TECHNOLOGY

- 46 enterprises installed



DATA CENTER

- Ambitious new data center project that seeks to combine progressive architecture, sustainability and the latest in IT technology.
- 4 main block
- Area of 75,500m²
- 24 IT rooms
- Capacity for more than 50,000 servers



MUNICIPAL GRANTS

GACE - Gabinete de Apoio à Criação de Empresas

Derrama

- Rate of: 1.20%
- Tax exemption for taxable persons with a turnover that in the previous year did not exceed €150,000.00.

IMI

- Rustic buildings: rate fixed at 0.80%
- Urban buildings evaluated under the terms of the CIMI (Municipal Property Tax Code): setting the rate at 0.35%
- Urban buildings: rate fixed at 0.70%

Examples of enterprises installed in Covilhã



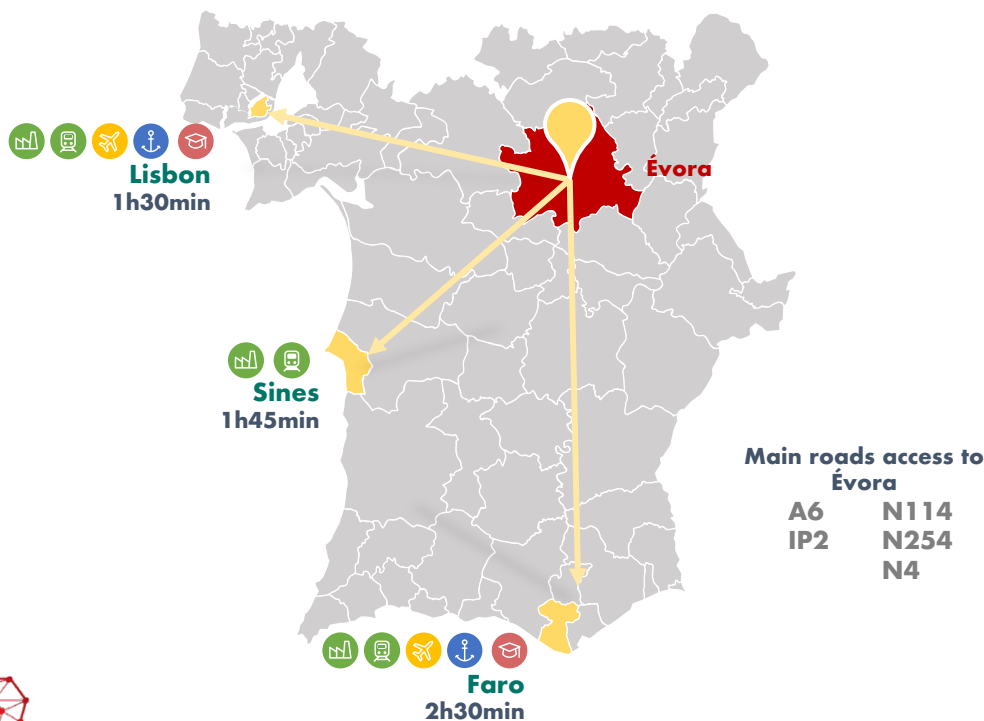


Évora

Our cities. Évora



Évora, the historic city lying at the heart of Alentejo, is heir to a rich and diverse cultural heritage, built and preserved over time. Founded (or refounded) by the Roman and by them named Ebora Liberalitas Iulia, the city was the stronghold that consolidated in Além-Tejo (beyond-tejo) the formation of the new kingdom of Portugal, during the twelfth century Christian peninsular reconquest.



KEY FIGURES - Évora

52,664
Population

7,028
Non-financial
Enterprises

1,307.1
km²
Area

1,330.00€
Monthly Wage average

6.876
University students

1,099.00€/m²
Average banking
evaluation of houses

13.8%
Young people (less than 15
years old)

8%
Weight of municipal expenses
with environment

Source: Pordata

Our cities. Évora

THE BLUE CORRIDOR NETWORK

The Blue Corridor Urban Network for Competitiveness and Innovation is part of a policy instrument called Urban Network for Competitiveness and Innovation which aims to overcome the weaknesses of the Portuguese cities through interurban cooperation strategies and the constitution of urban networks with sufficient scale and resources to develop new functions and attract innovative activities.

The Blue Corridor includes the municipalities of Arraiolos, Borba, Elvas, Estremoz, Évora, Montemor-o-Novo, Santiago Cacém, Sines, Vendas Novas and Vila Viçosa, that are strategically located on the link between the Lisbon Metropolitan Area and Spain, setting a territorial line up of urban centers that starts with the cities of the Alentejo Coast, through the so-called "Atlantic gateway" and structure the Central Alentejo territory, ending in Alto Alentejo with the connection to Badajoz, in Spain.



INDUSTRIAL/TECHNOLOGY PARKS

Parque de Ciência e Tecnologia do Alentejo

- Infrastructure for hosting and support initiatives to R&D transfer and promotion within the framework of the Regional Technology Transfer System

Parque industrial e tecnológico de Évora I

- Park for industry, warehouses and services branches with almost 270,8222m² of area

Parque industrial e tecnológico de Évora II

- Park with 95,113km² and incentives to enterprises such as tax benefits

Parque de Indústria Aeronáutica e Évora

- Exclusive park for aeronautic activities with 107ha.

Industrial areas:

- Zona Industrial Almeirim Norte/Sul
- Zona Industrial de Azaruja
- Zona Industrial de Graça do Divor
- Zona Industrial de Guadalupe

MUNICIPAL GRANTS

ÉvoraTech

- Incubator owned by the municipality for technology-based companies

FAME - Fundo de Apoio às Micro e Pequenas Empresas

- Innovative financial product that aims support small business projects recognized as interesting for municipality

Examples of enterprises installed in Évora



EMBRAER

COMPTA



Aptoide
Your Android App Store

**Moving forward.
Moving with a purpose.**

Thank you

